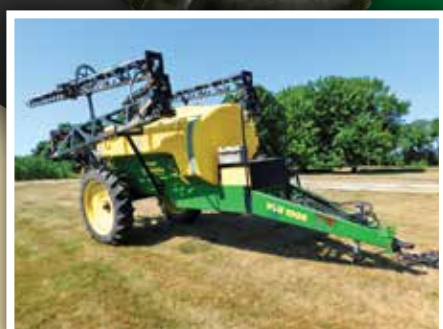


Farm Retirement

AUCTION

WEDNESDAY, SEPTEMBER 2, 2020 AT 10AM

PATON, IOWA
Auction located at
327 X Avenue, Paton, IA



Auctioneer's Note: Steve & Jackie Sandeen have been farming since 1975 and after 45 years of farming have decided to retire. Please feel free to call Steve with questions regarding their equipment. This auction will be a live public auction and we invite you to join us on auction day. Online bidding will be available on major items.

ONLINE BIDDING AVAILABLE



4WD TRACTOR

1994 John Deere 8960, 6552 hrs., 4WD, partial powershift, 3 hyd., BB, dual beam radar, front rock rack, 520/85R42 duals, (triples minus one rim & tires), S/N RW8960H002871 (work order on file)

MFWD TRACTOR

2001 John Deere 8310, 6,157 hrs., MFWD, powershift, deluxe cab, instructional seat, 3 hyd., 3 pt. w/quick hitch, Sm. 1000/ Lg. 1000 PTO, front fenders, rock box, 18.4R46 rear duals, 420/90R30 front singles, S/N RW8310P014554 (work order on file)

2WD TRACTORS

1979 John Deere 4440, 10,757 hrs., 2WD, quad range, cab, 2 hyd., 3 pt., 540/1000 PTO, (8) front suitcase weights, new PTO and foot clutch 12/2019, 18.4x38 rear duals, 10.00x16SL fronts, S/N 4440H015480R (work order on file, 1 owner)

1974 John Deere 4030, 7,838 hrs., 2WD, quad range, open station, 3 hyd., 3 pt., 540 PTO, WF, (2) front half-plated weights, 15.4-34 rears, 11L-15 3-rib fronts, S/N 4030H005404R (work order on file)

COMBINE

2000 John Deere 9650, 2,939 sep./ 4,073 eng. hrs., 2WD, walker, GreenStar ready, Y&M, Maurer hopper, chopper/spreader, 480/80R38 straddle duals, 14.9-24 rear tires, S/N H09650W685736 (Ag Leader display & receiver sell separate, work order on file)

CORN HEAD

2003 John Deere 893, corn head, 8x30", standard hook-ups, stubble lights, feeder house shield, hyd. deck plates, S/N H00893X701059 (1,500 acres on new deck plates, upper & lower sprockets, gathering chain)

FLEX HEAD

2003 John Deere 930F, flex head, 30", hyd. fore/aft, standard hook-ups, poly fingers, stubble lights, long knife, S/N H0D930F702172

PICK-UP HEAD

Massey Ferguson, pick-up head, 12", w/M-F pickup, 6620/7720 JD mounts

HEAD TRAILER

Ez Trail 672, head trailer, 30', 4-wheel, wagon style, 20.5x8-10 tires, S/N 672F1010032

PLANTERS

2011 Kinze 3600, Twin-Line planter, 16x30", 2 pt., tri-fold markers, center pivot, Martin row cleaners w/CleanSweep, 20/20 seed sense, spring down pressure, half width disconnect, rubber closing wheels, AmVac smartbox w/AmVac controllers, Evolution row units, S/N 624652 (1 owner)

2008 Kinze 3500, planter, 8/15, drawbar, bi-fold markers, spring down pressure, smooth disc openers, rubber closing wheels, 7.5x20SL tires, w/Kinze KPM3 monitor, S/N 903507

TILLAGE

2013 Case-IH 330, vertical tillage, 31', 7-1/2" spacing, hyd. lift, waffle blades, single pt. adj., tandems across, screw adj. gauge, rolling basket, 12.5L-15 on main, S/N JFH0053342

DMI Tiger-Mate II, field cultivator, 40', 6" spacing, 7" bolt-on sweeps, 5-section, single pt. adj., tandems across, pin adj. gauge wheels on wings, 3-bar coil tine harrow, 11L-15 F1 tires on main, S/N 821561

2013 Case-IH 870 Ecolo-Tiger, disc ripper, 7-shank, 24" spacing, 2" pts., shank guards, single pt. adj., rolling basket harrow, 385/65R22.5 tires, S/N YDD067424 (purchased new)

John Deere 230, disc, 20"6", 9" spacing, 3-section, 11L-15 tires, S/N 029466

International 710, plow, 4x16"

John Deere 825, row crop cultivator, 8x30, 3 pt., rolling shields, S/N N00825X009061

John Deere, rotary hoe



NH3 EQUIPMENT

NH3 Side Dress Bar, 8x30", 3 pt., (7) Yetter Magnum row units, Raven Accu-Flow Super Cooler, category II or III, single shutoff, single hose, Raven 440 monitor/controller, (1 owner)

GRAIN CART & WAGONS

(All 1 Owner)
2008 Demco 650, grain cart, front corner auger, 14", 1000 PTO, unload auger light, taillights, 24.5x32 waffle tires, S/N Y00061

2012 Demco 650, gravity flow, LH unload, taillights, unload lights, inspection windows, 4-wheel brakes, S/N C08852

2011 Demco 650, gravity flow, LH unload, taillights, unload lights, inspection windows, 4-wheel brakes, S/N B08729

2011 Demco 650, gravity flow, LH unload, taillights, unload lights, inspection windows, 4-wheel brakes, S/N B08745

2004 Demco 650, gravity flow, LH unload, taillights, unload lights, inspection windows, 4-wheel brakes, S/N 40222

HAY EQUIPMENT

Lely 280L, disc mower, 9', 3 pt., 540 PTO, new skirt, (purchased new)

Miller Pro 1350LH, rotary hay rake, 540 PTO, 13.5', 13-arm, lights, hyd. lift, walking tandems, S/N 1720982 (1 owner)

Lely, tedder, 2-basket, 540 PTO, S/N 76616

New Holland 575, small square baler, 540 PTO, hyd. swing, hyd. lift, hyd. tension, S/N 91813 (1 owner)

2007 Kuhn Mfg., bale grabber, 12-bale, skid steer mount (1 owner)

2007 Kuhn Mfg., hay accumulator, 12-bale, 7.60-15 tires (1 owner)

Hayrack 9'x20'6", steel frame back, 11L-15 tires on 6-bolt rims

Hayrack 9'x20', J&M gear, steel frame back, 12.5L-15 tires on 6-bolt rims

Hayrack 9'x20', steel frame back, 12.5L-15 tires on 6-bolt rims

Hayrack 9'x20'8", steel frame back, 11L-15 tires on 6-bolt rims

Hayrack 8'x20', steel frame back, 11L-15 tires on 6-bolt rims

Hayrack 8'x20', steel frame back, new timbers & floor, 11L-15 tires on 6-bolt rims

Hayrack 8'x16', steel frame back, new timbers & floor, 11L-15 tires on 6-bolt rims



Steve & Jackie Sandeen, 515.571.2350
For information contact Duane Norton at Steffes Group,
641.423.1947 or 515.450.7778

SteffesGroup.com



Steffes Group, Inc., 2245 East Bluegrass Road, Mt. Pleasant, IA 52641 | 641.423.1947

